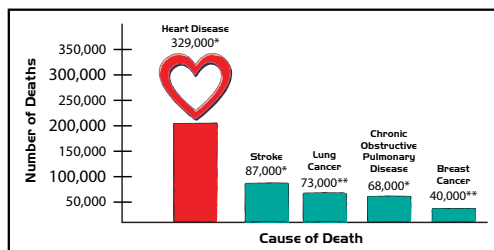


**Early detection and treatment can save lives & reduce healthcare costs from continuing to skyrocket**

### Did you know...

- Heart disease is the No. 1 killer of women and stroke is the No. 3 killer of women.
- On average, over 89 females die from heart disease and stroke each day.
- Over 25% of sudden cardiac death victims have no symptoms.
- Over 50% of all stroke victims have no symptoms.
- Sudden cardiac death claims more lives than stroke, lung cancer, breast cancer, automobile accidents and AIDS combined.
- Stroke is the number one reason for nursing home admissions.



### Life Scan Screening

**UPSEU Member Price \$199**  
(original price \$299/  
Winthrop discounting \$100.00)

**September 22, 2010**

**October 13, 2010**

**November 10, 2010**

**December 15, 2010**

**Please call to reserve your appointment**

**1-866-WINTHROP  
(1-866-946-8476)**



LifeScan services provided by:

**CardiacScan**  
IMAGING SERVICES™

# ARE YOU AT



## WARNING!

- Cardiovascular disease is the #1 killer in the United States for both men & women and the leading cause of permanent disability.
- According to the American Stroke Association, someone in the U.S. has a stroke every 45 seconds and someone dies every 3 minutes. Over 50% of all stroke victims have no symptoms.
- The American Heart Association recommends that prevention for heart attacks begin at age 20.

## LOVE YOUR HEART

[www.cardiacscanny.com](http://www.cardiacscanny.com)



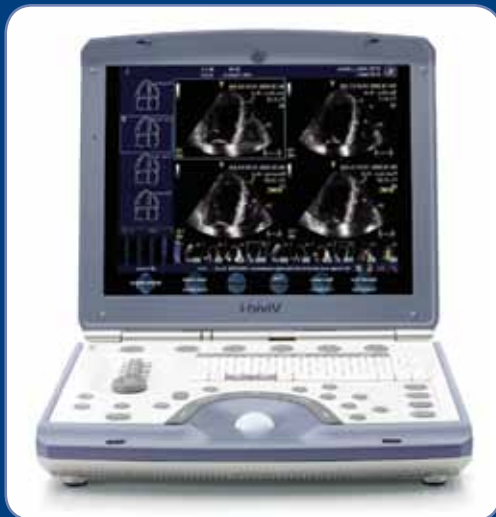
LifeScan services provided by:

**CardiacScan**  
IMAGING SERVICES™

The LifeScan procedure is a simple, painless, non-invasive, ultrasound package that can evaluate your risk for Cardiovascular Disease, Stroke and Peripheral Vascular Disease. We will perform an Echocardiogram, a Carotid Ultrasound, and an Ankle-Brachial Index in complete privacy. The studies are performed by the most highly-trained Cardiovascular Technologists and you are provided with an immediate assessment of your risk with a complete confidential and customized report and DVD to follow up.

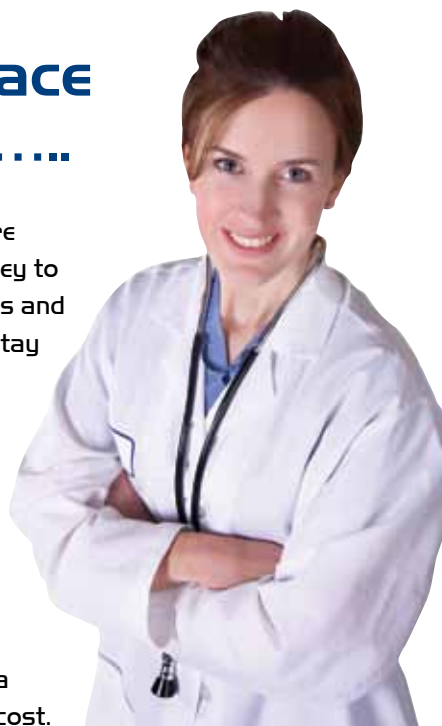
## Discover the Advantages of Ultrasound Imaging:

- Performed in complete privacy
- Confidential and customized report, read and analyzed by a highly respected Cardiologist
- Complete procedure in approximately 30 minutes



## Imagine your peace of mind.....

Healthcare costs are skyrocketing. The key to lowering these costs and ensuring that you stay healthy is through preventative measures. By detecting potential risks early, health issues can be managed much more easily and at a significantly lower cost.



### Your Procedure Will Include:

#### ECHOCARDIOGRAM:

An Echocardiogram is a test that uses sound waves to create a moving picture of the heart. The picture is much more detailed than x-ray image and involves no radiation exposure. Doctors will be able to learn about the size, shape, and movement of your heart muscle. This test can also show how the heart valves are working and how blood is flowing through your heart. Echocardiograms will also give doctors information about your arteries. An echocardiogram (often called "echo") is a graphic outline of the heart's movement. During this test, high-frequency sound waves, called ultrasound, provide pictures of the heart's valves and chambers. This allows the technician, called a sonographer, to evaluate the pumping action of the heart. Echo is often combined with Doppler ultrasound and color Doppler to evaluate blood flow across the heart's valves.

#### CAROTID ULTRASOUND:

Why do a Carotid Ultrasound; to detect Carotid artery disease, which occurs when the carotid arteries in the neck become narrow and stiff with plaque. Strokes result either from obstruction of the blood flow to the brain by or when bits of plaque and clots break off from the plaque and flow to the brain. The carotid ultrasound is most frequently performed to detect narrowing, or stenosis of the carotid artery. The major goal of carotid ultrasound is to screen patients for blockage or narrowing of their carotid arteries, which if present may increase their risk of having a stroke. Once the diagnosis is made a comprehensive treatment may be initiated.

#### ANKLE-BRACHIAL INDEX:

(ABI) is a simple, reliable means for diagnosing PAD (Peripheral arterial disease). Blood pressure measurements are taken at the arms and ankles using a pencil shaped ultrasound device called a Doppler. A Doppler instrument produces sound waves (not x-rays) and is considered noninvasive because it does not require the use of needles or catheters. The ABI test is simple enough to be performed in any doctor's office or vascular laboratory. Individuals with a high Ankle-brachial index are three to five times more likely to be at risk of heart attacks

#### Preparing For Your Procedure:

- There is no special preparation for this test.
- No medications are given to you during the test. You will be able to drive yourself home after the test is completed.

**See the back for details and learn when we'll be in your neighborhood.**

