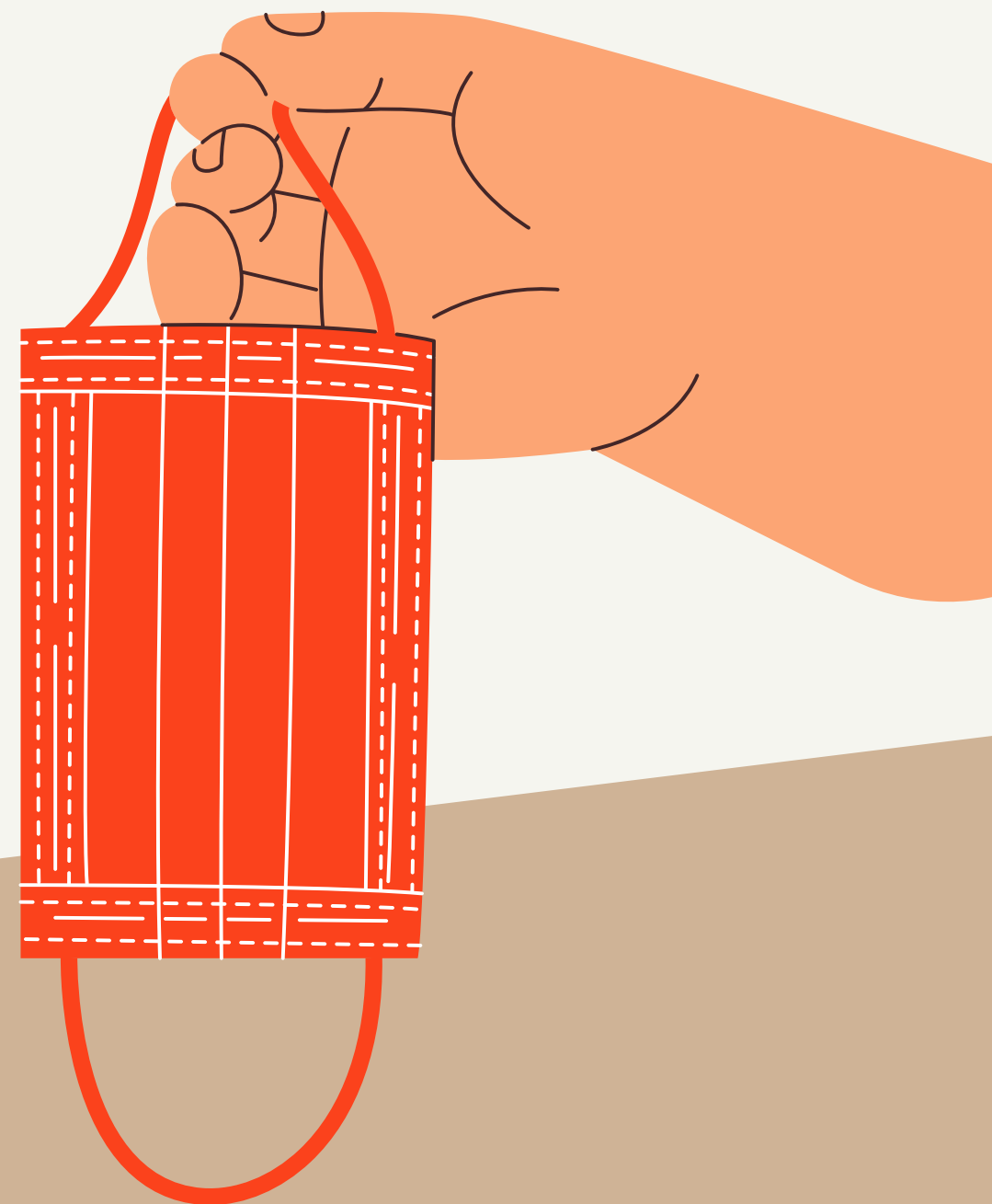


#StopTheSpread

How to use a mask?

Source: World Health Organization



Before Putting on a Mask:

Clean hands with **alcohol-based hand rub** or **soap and water**.



While Wearing a Mask:

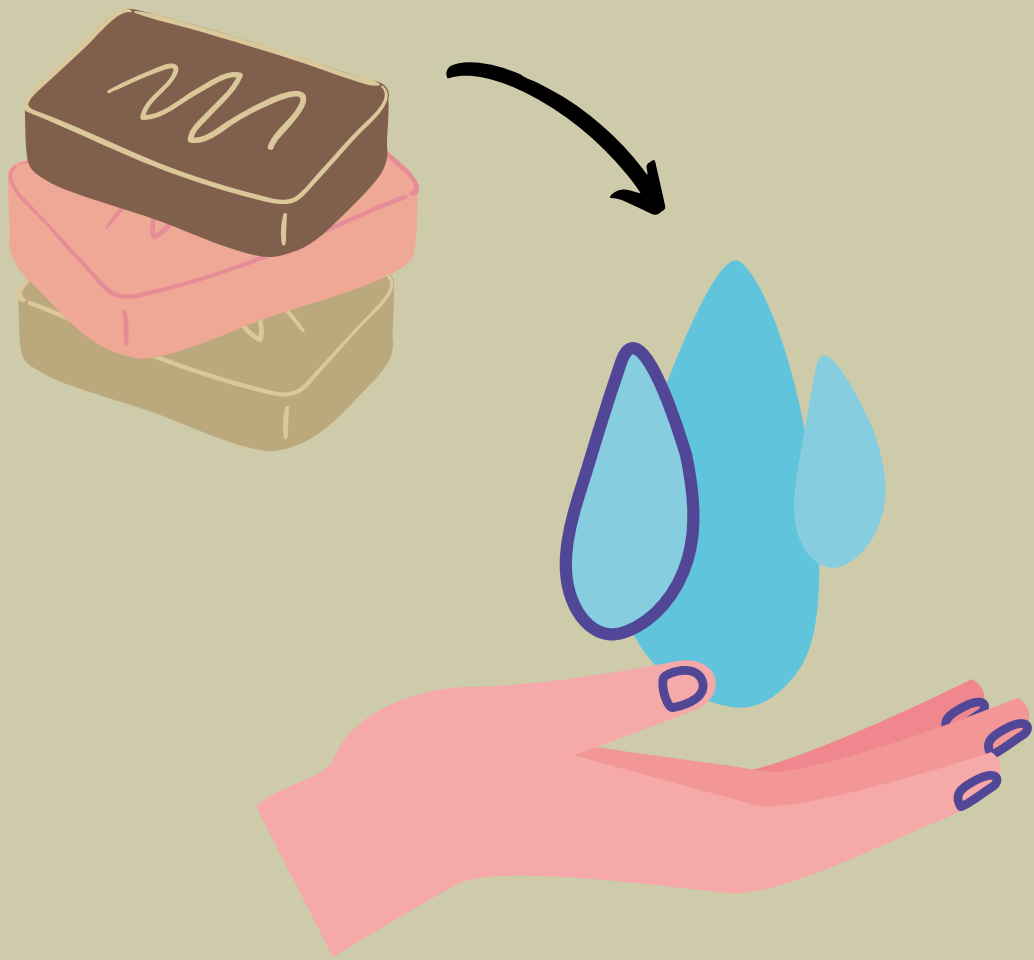
1. **Cover your mouth and nose.** Make sure there are no gaps between your face and the mask.
2. **Avoid touching the mask.** If you do, clean your hands with alcohol-based hand rub or soap and water.
3. Replace the mask with a new one as soon as it is damp. **Do not re-use single-use masks.**



To dispose of the mask:

1. Remove the mask from behind using the strings. **Do not touch the front of mask.**
2. Discard the mask **immediately** in a closed bin.
3. **Clean hands** with **alcohol-based hand rub** or **soap and water**.

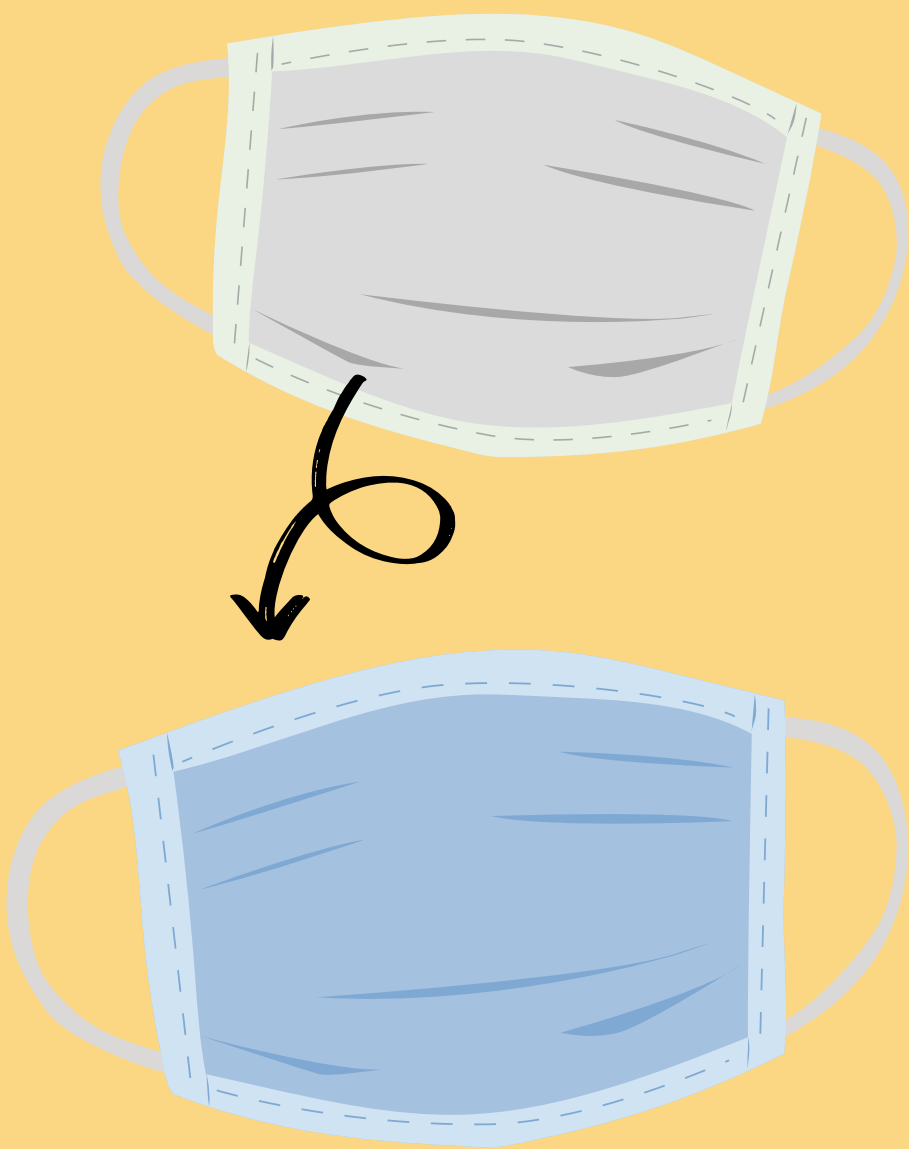
A GUIDE TO MASK USE



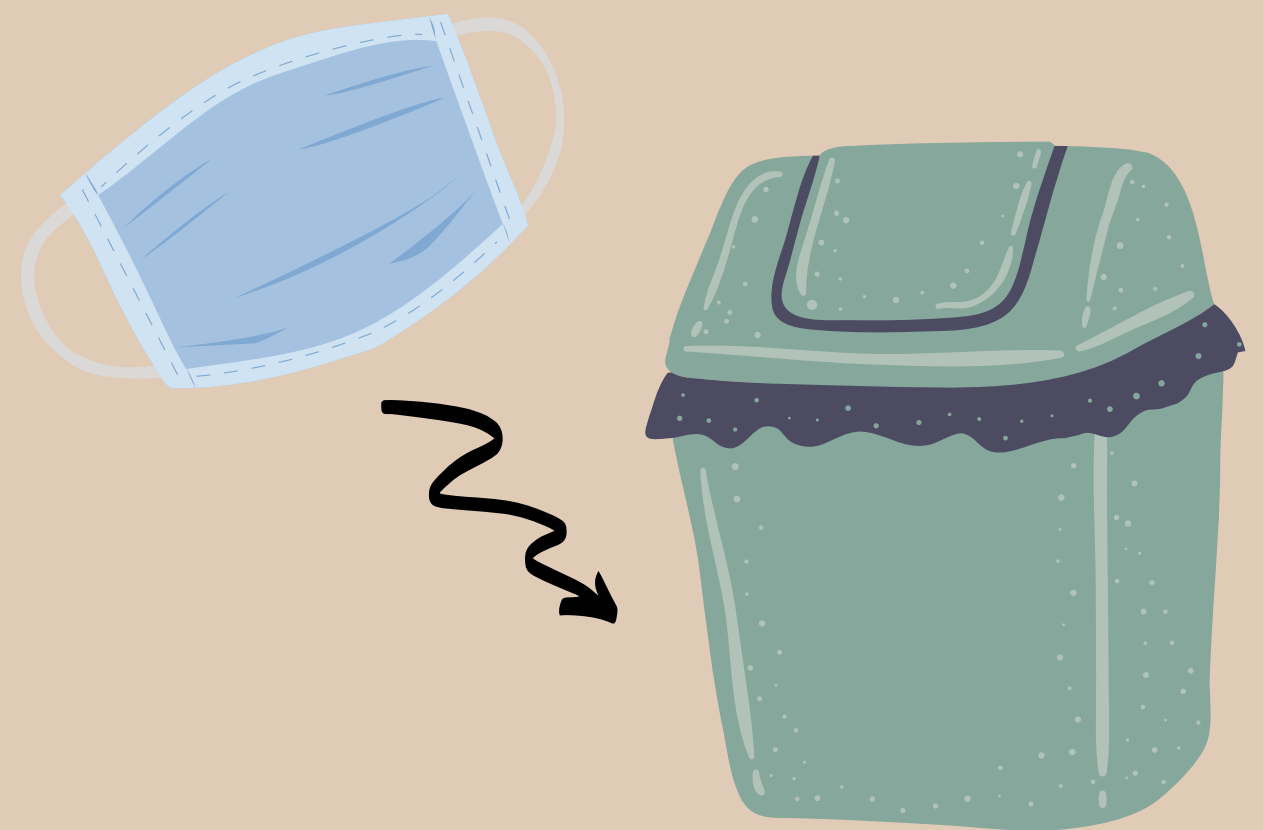
Before putting on a mask, clean hands with alcohol-based hand rub or soap and water.



Cover mouth and nose with mask and make sure there are no gaps between your face and the mask.



Replace the mask with a new one as soon as it is damp and do not re-use single-use masks.



To remove the mask: remove it from behind (do not touch the front of mask); discard immediately in a closed bin; clean hands with alcohol-based hand rub or soap and water.